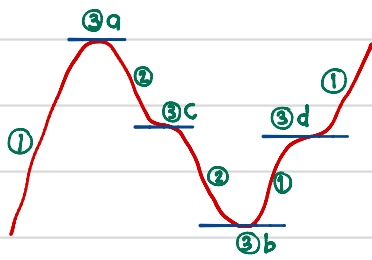


Applications of Differentiation



1. Increasing function : $f'(x) > 0$
2. Decreasing function : $f'(x) < 0$
3. Stationary points : $f'(x) = 0$
 - a. Relative Max point = Max Turning point
 - b. Relative Min point = Min Turning point
 - c. Negative Inflection Point
 - d. Positive Inflection Point